

AC-CELL 100 - Crawler Inspection System

Developed as a stand alone Remote Visual Inspection (RVI) tool, this small, wet or dry environment crawler is fully compatible with the industry proven **AC-ROV 100** Underwater Inspection system.

The complete **AC-CELL 100** system comes in one rugged waterproof hand carry case with an all up weight of just 16kg. **CE Marked** and certified for all “feet wet” applications, offshore, inshore or onshore, it is the safest and quickest tool for your confined space inspection. Easily deployed in less than **3 minutes** the **AC-CELL** is a single operator system in all aspects of its operation.

- **Single Operator**
- **Hand Carry**
- **Rapid Deployment**

The system is rated to a market leading **100m water depth** with a **100mm “drive through”** diameter and a **73mm “drive under”**. The six wheel all drive crawler, can be configured with a range of wheel types and sizes to suit differing pipe diameters and terrains. Fitted with a low light front facing colour camera, an even more light sensitive rear view B&W camera and dual arc LED’s both ends as standard, the powerful and agile **AC-CELL** is ideal for inspecting seriously hard to reach spaces. These market leading attributes are delivered in an extremely robust and reliable low maintenance design which means the **AC-CELL** keeps coming back for more.

- **100m Depth Rating**
- **100mm “Drive Through” diameter**
- **73mm “Drive Under”**
- **Forward and Rear View Cameras**

The system utilises the **existing topside** of the renowned **AC-ROV 100** Underwater Inspection System.

The power, control, telemetry and monitoring elements are common to both vehicles allowing for **EITHER / OR** operation of the Crawler (AC-CELL) or the underwater vehicle (AC-ROV).

A combination first in the RVI tool market, the combined system provides a broad scope inspection capability in a unique, versatile and highly cost effective package.

- **Compatible with AC-ROV 100 Topside**
- **No Modifications – Plug and Play Configuration**
- **Free Flying Or Driven Inspection Capability**

Check its **PEDIGREE** – designed and manufactured in Aberdeen (Scotland) by born and bred diving and ROV engineers that routinely deliver solutions for water depths from 0 to more than 6000m. Check these people out at www.alloceans.co.uk



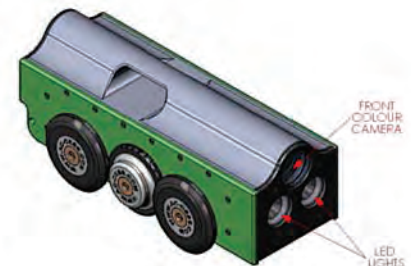
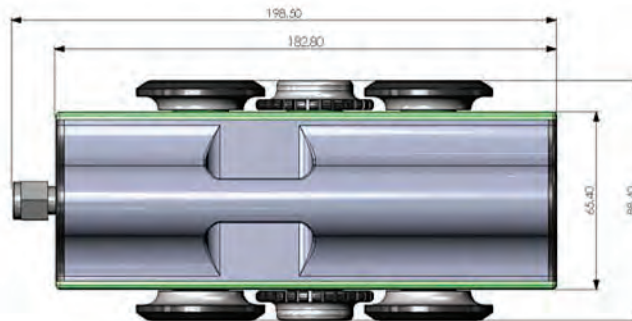
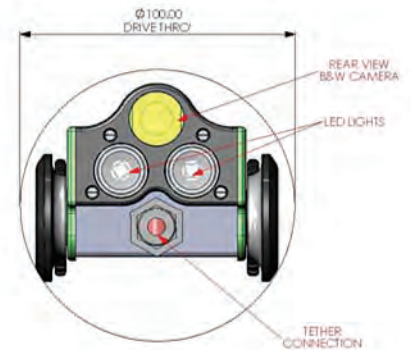
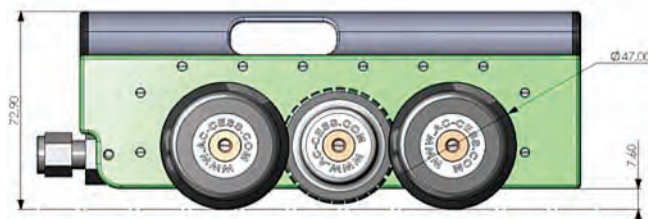
SPECIFICATION

**AC-CELL
SIZE
WEIGHT
DEPTH RATING
CAMERA
DRIVE
LIGHTS
CONTROL
MONITOR
VIDEO OVERLAY
SENSORS
TETHER
SYSTEM POWER
INPUTS
OUTPUTS
HANDLING
OPTIONS**

MODEL 100

199mm x 73mm x 89mm (7.8" x 2.9" x 3.5")
 1.65kg (3.6lbs)
 100m (328feet)
 Colour CCD 800 line x 0.1 lux (NTSC or PAL)
 Rear View B&W Camera (480 line x 0.05 lux)
 6 Wheels (AWD)
 4 single diode LEDs (2 Front, 2 Rear, variable intensity)
 Single handed 3-D controller (LH or RH)
 7" colour, integrated DVR, removable SD card, waterproof
 Date, Time, Power Setting
 Temperature, humidity and water ingress
 Options to 120m with Tether Deployment System (TDS)
 300 watt
 100/240, 50/60Hz auto ranging
 Composite Video (single channel)
 16kg (35lbs) complete in one hand carry roller case
 490mm x 380mm x 230mm (19.25" x 15" x 9")
 Various wheel types and sizes
 Slip Ring Tether Deployment Systems
 Tethers to 120m

**100mm Pipe
Drive Through
73mm Drive
Under**



AC-CELL
WITH SMALL PIPE WHEEL SET

NOTES

1. The tether cable and connectors are completely field serviceable. Any damaged cable can be cut out and any remaining serviceable cable reterminated and used again. No need for cable moulding services.
2. Video recording device provisioned for but not included.